

1

2

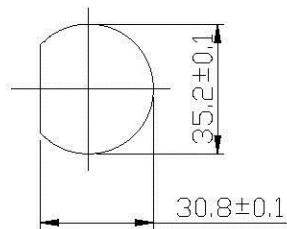
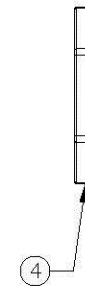
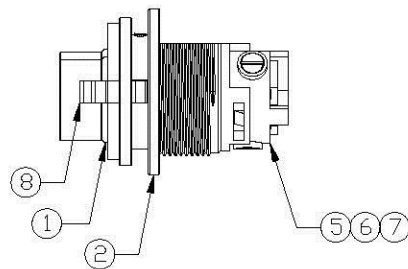
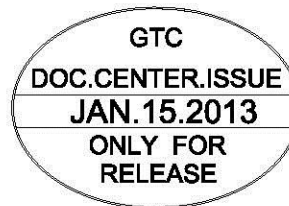
3

4

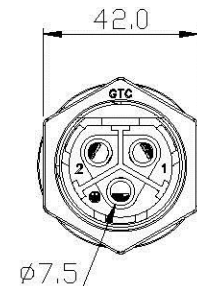
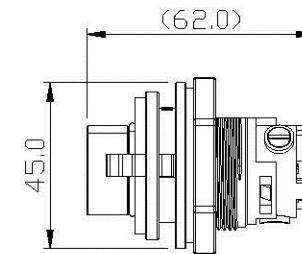
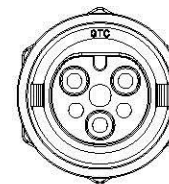
Notes: (Unless Otherwise Specified)

1. Waterproof Rate: IP67.
2. Recommend Panel Thickness: 0.8 to 6.0 mm.
3. Recommend Hex Nut Torque: 9~10 Kgf-cm.
4. RoHS Compliant.

REV	ECN#	DESCRIPTION OF REVISION	DRAW BY DATE	CHECK BY DATE	APPROVE BY DATE
A0	ECN-130105	Mass Production	Lucas 01/10/13	Ray 01/10/13	Ray 01/10/13



Recommend
Panel Cut-Out



8	Clamp	Thermoplastic Color: Red	1
7	Machine Screw	S15C Finish: Ni Plated	3
6	Fixed lid Male 3P	Thermoplastic Color: Black	1
5	Contacts	Copper Alloy Finish: Ni Plated	3
4	Hex Nut	Thermoplastic Color: Black	1
3	Gasket	Silicone Color: Black	1
2	Housing	Thermoplastic Color: Black	1
1	O-Ring	Silicone Color: Red	1
Item	Part Name	Material / Finish	Qty

TITLE						DRAWING NUMBER			REV.
Power M35 41A 3P Field Installable Panel Male Screw-in Push Lock						GT1E1401-42030			A0
	B	1:1	Lucas 06/14/12	Ray 06/14/12	Ray 06/14/12	X.X X.XX	± 0.5 ± 0.2	X.XXX ANGLES ± 1°	mm 1/1
THIRD ANGLE PROJECTION	SIZE	SCALE	DRAW / DATE	CHECK / DATE	APPROVE / DATE	TOLERANCES		UNIT	SHEET

Allconnectors

www.allconnectors.de
Tel.: 0345 711 7009503
70794 Filderstadt, Germany

Info@allconnectors.de
Fax: 0345 711 7009504
Kettnerstr. 23

THE INFORMATION CONTAINED HEREIN IS THE PROPRIETARY PROPERTY OF GT CONTACT CO., LTD. THE POSSESSOR AGREES TO THE FOLLOWING:
(a) TO MAINTAIN THIS DOCUMENT IN CONFIDENCE
(b) NOT TO REPRODUCE OR COPY IT
(c) NOT TO REVEAL OR PUBLISH IT IN WHOLE OR PART
(d) ALL RIGHTS RESERVED

1

2

3

4